



# RESPECT OUR SCHOOL

At LADYBROOK PRIMARY SCHOOL

we believe staff, parents, carers and children are entitled to a safe and protective environment in which to learn and work.

We strive to ensure that our school offers a warm and nurturing environment. All members of the school community and visitors should treat each other and be treated with respect.

To feel safe and work together we use restorative approaches as the foundation of our practice. Any behaviour that may lead to feelings of harassment, alarm or distress to members of our community, will not be tolerated and action taken.

## WE EXPECT THAT:

All adults set a good example to children at all times, showing them how to get along with all members of the school and the wider community.

No one - staff, governors, parents, carers, volunteers or children, is subjected to abusive behaviour or any form of threats from visitors on the school premises.

## PLEASE AVOID:

Using offensive or threatening language towards or about others (children, parents, staff, carers or the wider community)

Any disruptive behaviour that interferes with the running of our schools

Any defamatory or offensive comments about people at school on any form of social media

The school reserves the right to take any necessary actions to ensure that members of the school community are not subjected to any form of abuse, in line with our policy and procedures.

We will not tolerate bullying of any kind, including bullying that is based upon or refers to one or more of the nine protected characteristics (Equality Act 2010). These include race, religion, gender, disability and LGBTQ+.

## Thank you for your support and understanding





STOCKPORT  
METROPOLITAN BOROUGH COUNCIL

# STOP:

## THINK BEFORE YOU ACT!

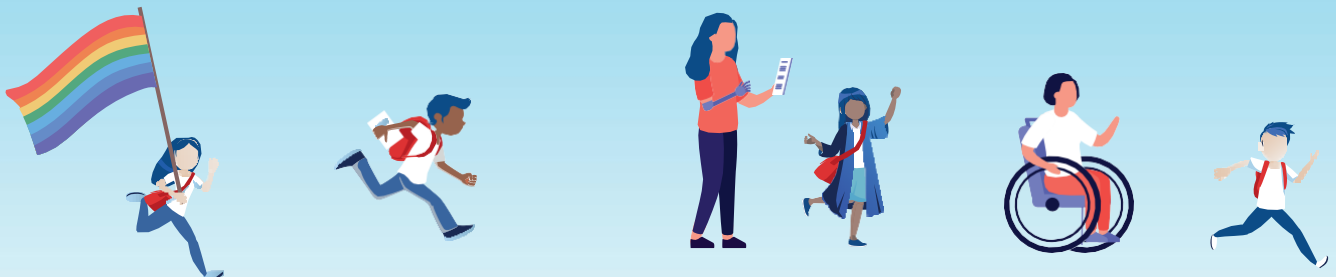
At LADYBROOK PRIMARY SCHOOL

we treat everyone with respect.

We will not tolerate bullying of any kind, including bullying that is based upon or refers to one or more of the nine protected characteristics (Equality Act 2010).

These include race, religion, gender, disability and LGBTQ+.

Individuals who are violent or aggressive (physically or verbally) will be asked to leave the premises. Further action may be taken in accordance with our school policies and procedures.



Thank you for your support and understanding

