

# Welcome to Reception 2024/2025



# Staff

- ▶ Teachers - Miss Woodward and Miss Hodgkinson (Miss Ridgway from January 2025)
- ▶ Teaching assistants - Mrs Robinson

# Uniform

- ❖ Please label all uniform (shoes/coat)
- ❖ Coat needed EVERY DAY
- ❖ PE bags - drawstring bag, a plain white t shirt and black shorts. No huge bags please; we have no space!
- ❖ No jewellery - earrings must be plain, small studs (children to bring own tape to cover for PE)
- ❖ No nail varnish
- ❖ All long hair - tied back - its own colour please

# Early reading

- ❖ Reading sessions will be on Monday and Thursday Your child will have 2 books to read throughout the week at home. Please leave them in their bookbags everyday. Book change will be on the opposite day they read (if they read on a Monday book change will be Thursday and vice versa)
- ❖ Oxford Reading Tree Scheme will be starting next week including the character matching game.
- ❖ Children will read to an adult once a week and they will have a book change once a week.
- ❖ Stories with no words to begin with once the children recognise the characters they will move onto books with words.
- ❖ Talk about the pictures, feelings, predictions, initial sounds.
- ❖ All children will choose a library book once a week, this is for grown ups to share with your child and for your child to enjoy listening to stories.
- ❖ Please sign your child's diary when they have read their reading books so we know if they need a book change or if there is something that they have found tricky.

# Phonics

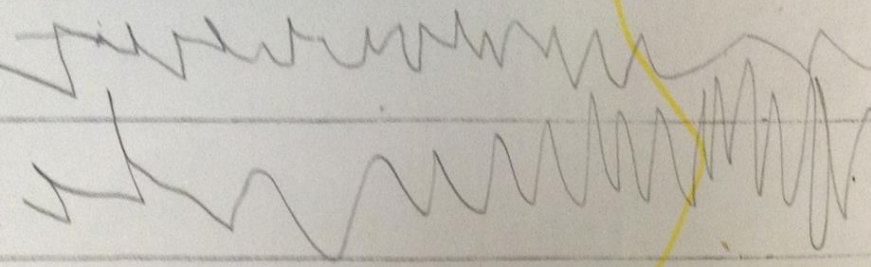
- ❖ Floppy's Phonics - links to Oxford reading tree. Phonics sessions 4 times a week.
- ❖ Listening games, finding objects with the same initial sound, rhyming words - you can play these at home too.
- ❖ Teaching the sound and the letter name e.g letter A sound a.
- ❖ Once we start a few letters we then start blending e.g c-a-t.
- ❖ Then when doing reading with your child they will start to blend. Some words will be recognisable eg mum, dad.
- ❖ Tricky words- to, the, I , no, go.



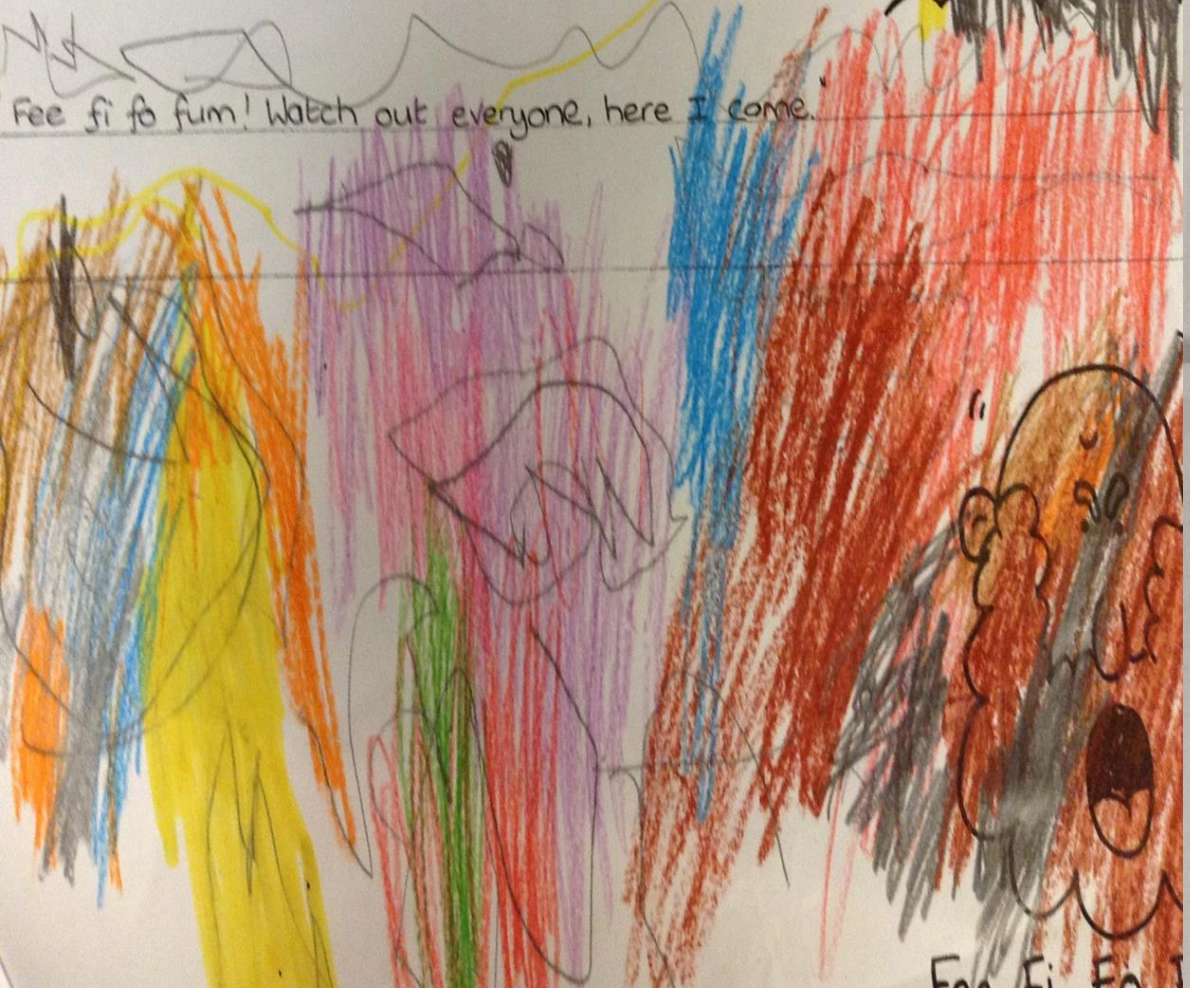
# Early writing

- ❖ Children will come into school making marks, some writing their name.
- ❖ We will be working on writing their names from now on - please also practise this at home.
- ❖ First we will see lines, then shapes, then letter like shapes and then letters, then words and sentences.

# Jack and the Beanstalk



Fee fi fo fum! Watch out everyone, here I come.

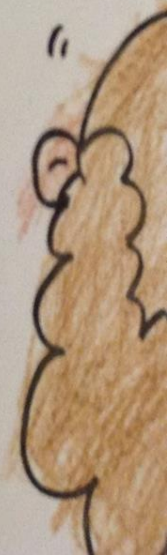


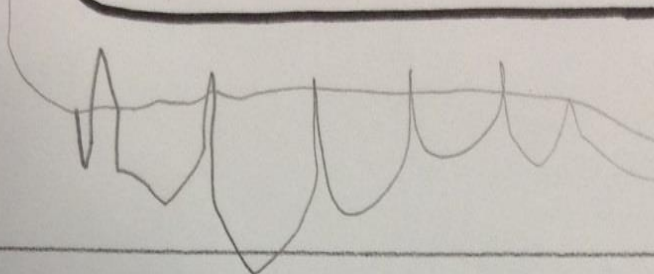
Fee Fi Fo

# Jack and the Beanstalk

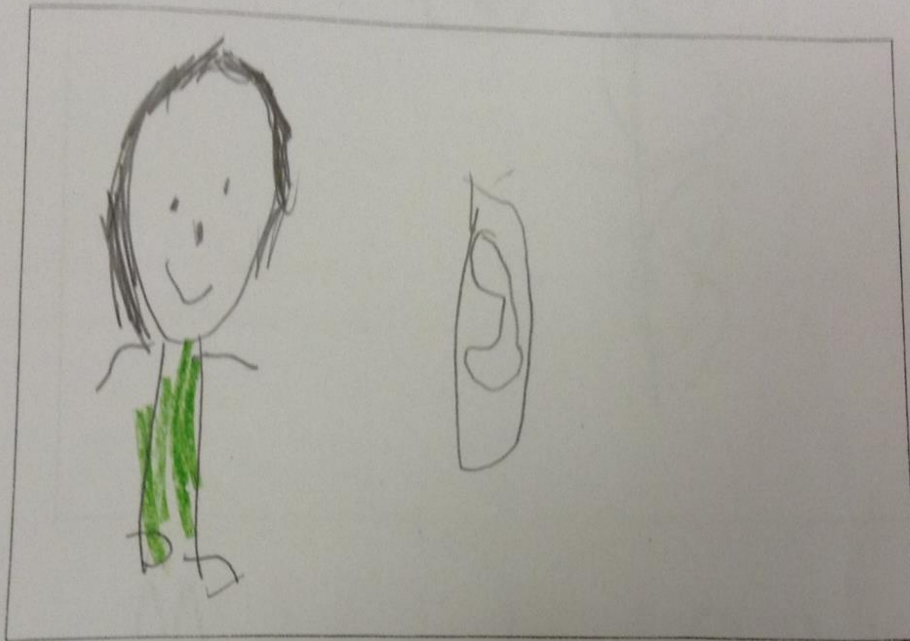
Jack and the beanstalk

Jack and the beanstalk. The giant squirrel likes eating trees.





a d z c w  
apple donut sandwich cake water



I P V T Q \$ N i l l  
bean

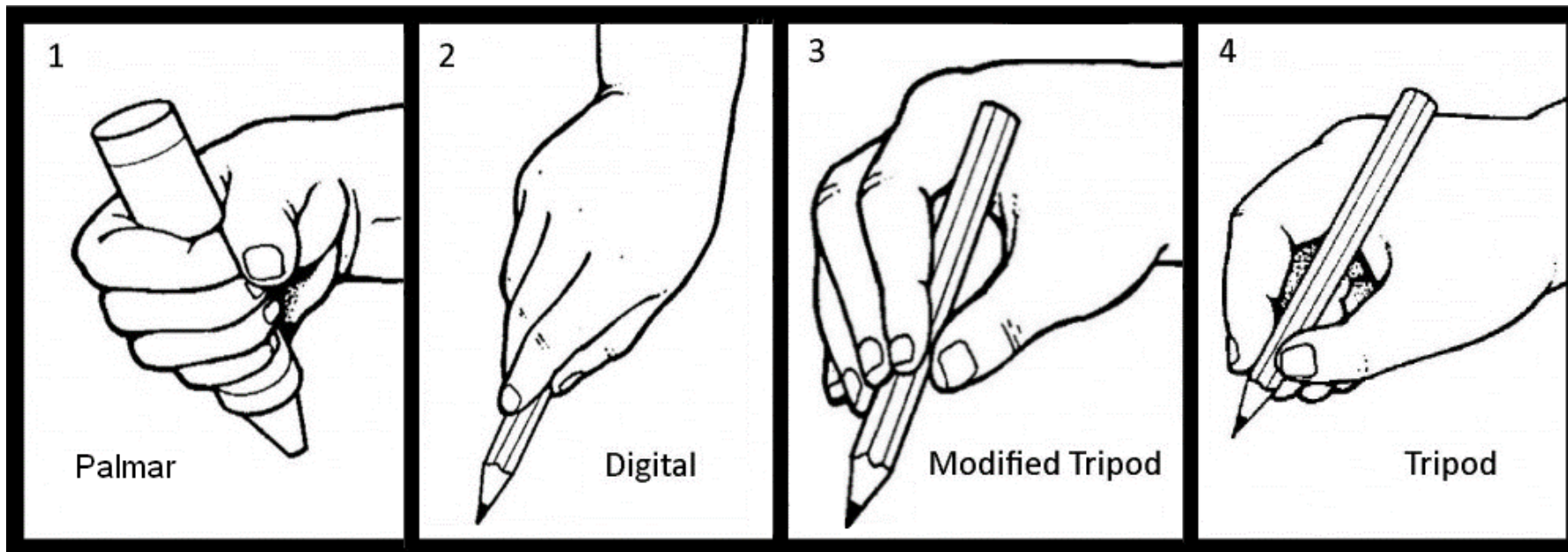
o p o t

first I did the egg  
 and spoon race then  
 I did the running  
 race.  
 then I had a stop  
 Icepop.



once upon a time there  
 was a crew of pirates. They  
 had a big ship the pirates  
 wanted trezry so they sailed  
 to a island and they looked  
 and looked they could not  
 find the trezry so they  
 sailed away and they lived  
 happily ever after. The end.

- ❖ Pencil grip- we do fine motor activities to develop this through continuous provision, inside and outside. Dough gym and funky fingers, name writing, which will lead to handwriting in books later on in the year.



# Maths

- ❖ Maths is mostly practical. We do begin to record this as and when but seeing it visually and playing games helps them retain the information - please practise counting, number recognition and ordering numbers at home.
- ❖ In school we do lots of finding numbers, ordering, counting objects which will lead into addition and subtraction.
- ❖ Our Maths scheme also relates to the Number block series which children are familiar with.



# Other Information

- ❖ Baseline assessments / Wellcomm assessments
- ❖ All about me sheet
- ❖ School lunches- please choose with your child each week by Thursday- **NO NUT PRODUCTS OR CEREAL BARS**
- ❖ Support from home with writing and maths is much appreciated and will make a difference
- ❖ Home/School diary is checked everyday please add any notes in there if needed.
- ❖ School starts at 8.50am-9am, children to start lining up outside and parents to say their goodbyes in the line.
- ❖ School finishes at 3.20pm- book bags and water bottles will be outside the door for grownups to collect before the children come out.
- ❖ PE will usually be on a Thursday for the Autumn term, Spring and Summer may change, however we will let you know. PE kit will stay at school and we will send it home at half term to be washed.
- ❖ Yearly Snack money £25 please pay this on Parentpay
- ❖ Family photo for their learning wall
- ❖ Check emails and notices around school for PTA events. E.g Discos and fairs.
- ❖ **Date for diaries- Reception class assembly- Wednesday 2nd July 2.30pm**

Any questions?